

KENSINGTON REPLAT OF PALM BEACH POLO AND COUNTRY CLUB WELLINGTON P.U.D.

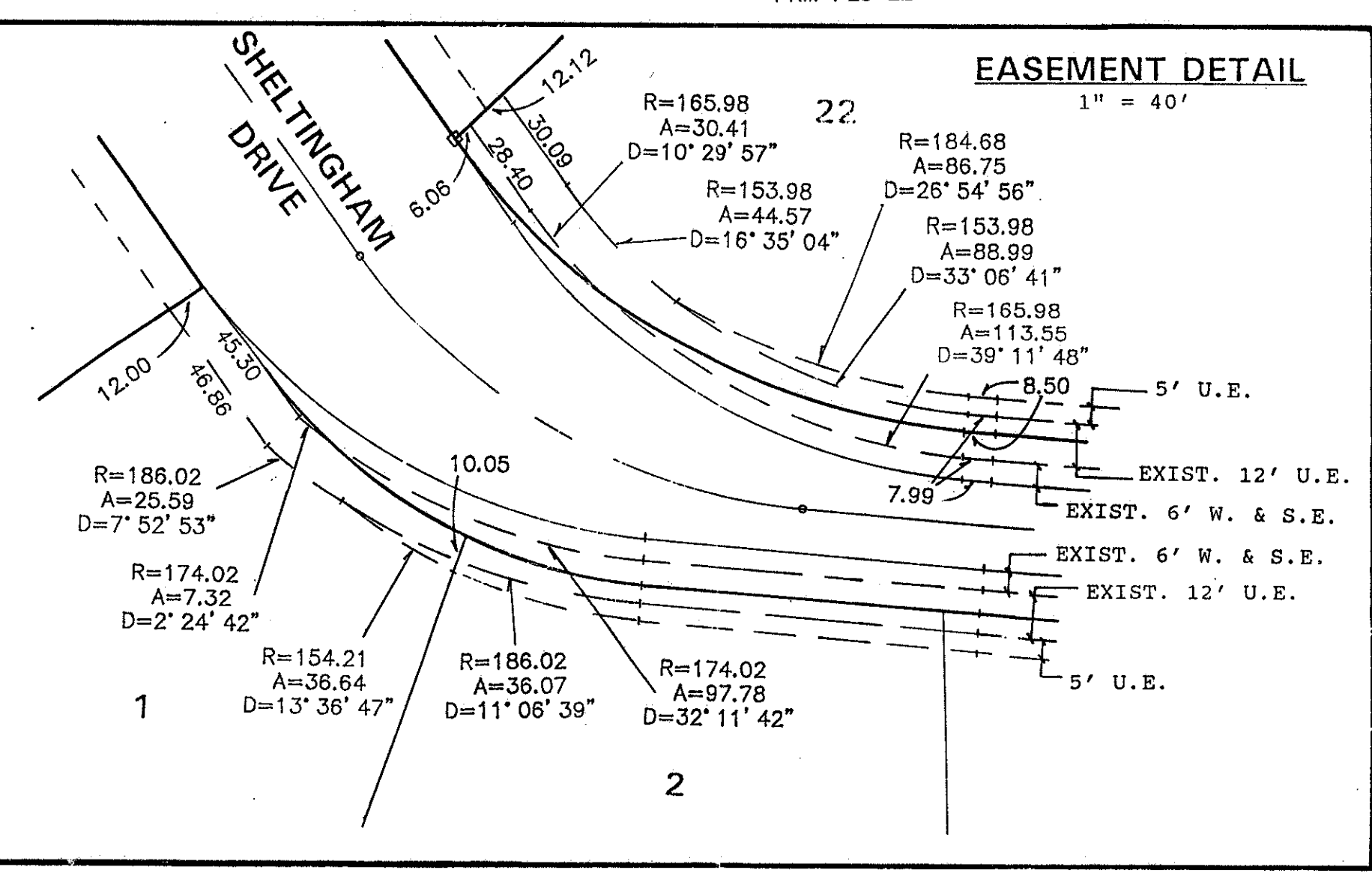
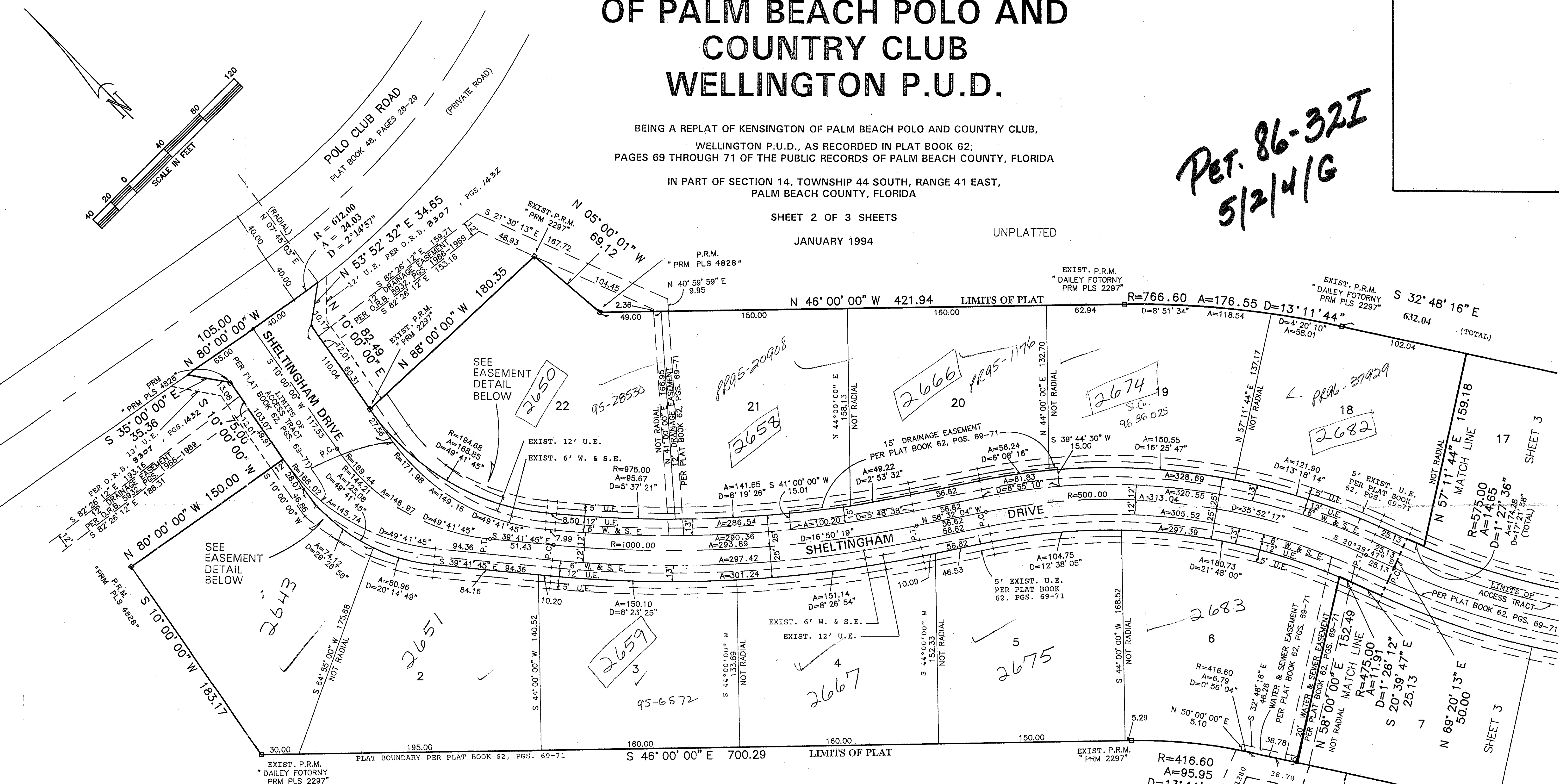
BEING A REPLAT OF KENSINGTON OF PALM BEACH POLO AND COUNTRY CLUB,
WELLINGTON P.U.D., AS RECORDED IN PLAT BOOK 62,
PAGES 69 THROUGH 71 OF THE PUBLIC RECORDS OF PALM BEACH COUNTY, FLORIDA
IN PART OF SECTION 14, TOWNSHIP 44 SOUTH, RANGE 41 EAST,
PALM BEACH COUNTY, FLORIDA

SHEET 2 OF 3 SHEETS

JANUARY 1994

UNPLATTED

PET. 86-32I
5/2/4/G

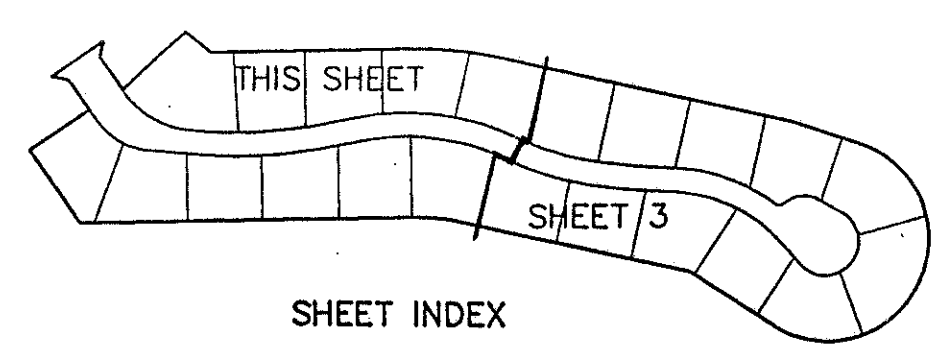


UNPLATTED

NOTE: THE 6' W. & S.E. AND THE 12' U.E. ARE AS PER PLAT BOOK 62, PGS. 69-71.

LEGEND

- P.R.M. = PERMANENT REFERENCE MONUMENT
- EXIST. = EXISTING
- PGS. = PAGES
- U.E. = UTILITY EASEMENT
- W.&S.E. = WATER AND SEWER EASEMENT
- O.R.B. = OFFICIAL RECORD BOOK
- R = RADIUS
- A = ARC LENGTH
- D = DELTA (CENTRAL ANGLE)
- P.C. = POINT OF CURVATURE
- P.T. = POINT OF TANGENCY
- R.P. = RADIUS POINT
- P.I. = POINT OF INTERSECTION
- P.L.S. = PROFESSIONAL LAND SURVEYOR



TAZ-730

Subdivision * Kensington Replat
 BOOK 73 PAGE 201
 FLOOD ZONE A0-1
 QUAD * 62 ZONING * AR
 SE 86-32 ZIP CODE 33411
 PUD NAME Wellington

0332-106
73/201

SCALE: 1" = 40'	NICK MILLER, INC. Surveying	DRAWN BY:
DATE: JAN. '94	Planning & Development Consultants	CHK
KENSINGTON REPLAT OF PALM BEACH POLO AND COUNTRY CLUB WELLINGTON P.U.D.		
2500 RCA Blvd. • Suite 105 Palm Beach Gardens, Florida 33410 (407) 627-5200	DRAWING NUMBER	94001